

# PRESENTATION OF PORTOS DE CABO DELGADO PROJECT OF INTEGRATED LOGISTICS SERVICE - PEMBA



August-2014

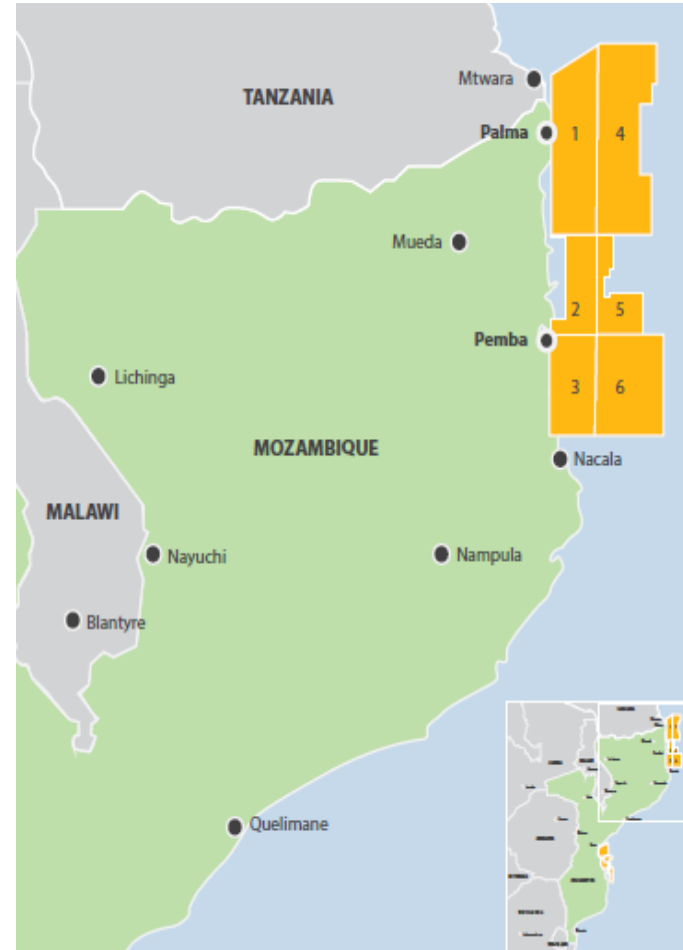


## OBJECTIVES OF PRESENTATION

- Introduce the company Portos de Cabo Delgado and the objectives that guided its creation.

# Introductory Note

The discovery of large reserves of natural gas in the Rovuma Basin above 190 TCFs (trillion cubic feet) put Mozambique on the map of global hydrocarbon industry and opened the doors to the implementation of the largest foreign direct investment project ever undertaken in the country.



# Introductory Note

However the convertibility of this resource into wealth requires the existence of adequate infrastructure, such as ports processing plants, transmission pipelines, among others that may allow the link between production centers and consumer market.

The existing facilities in pemba do not have the potential to support neither current exploration and development campaigns planned by the operators nor future block exploration and development

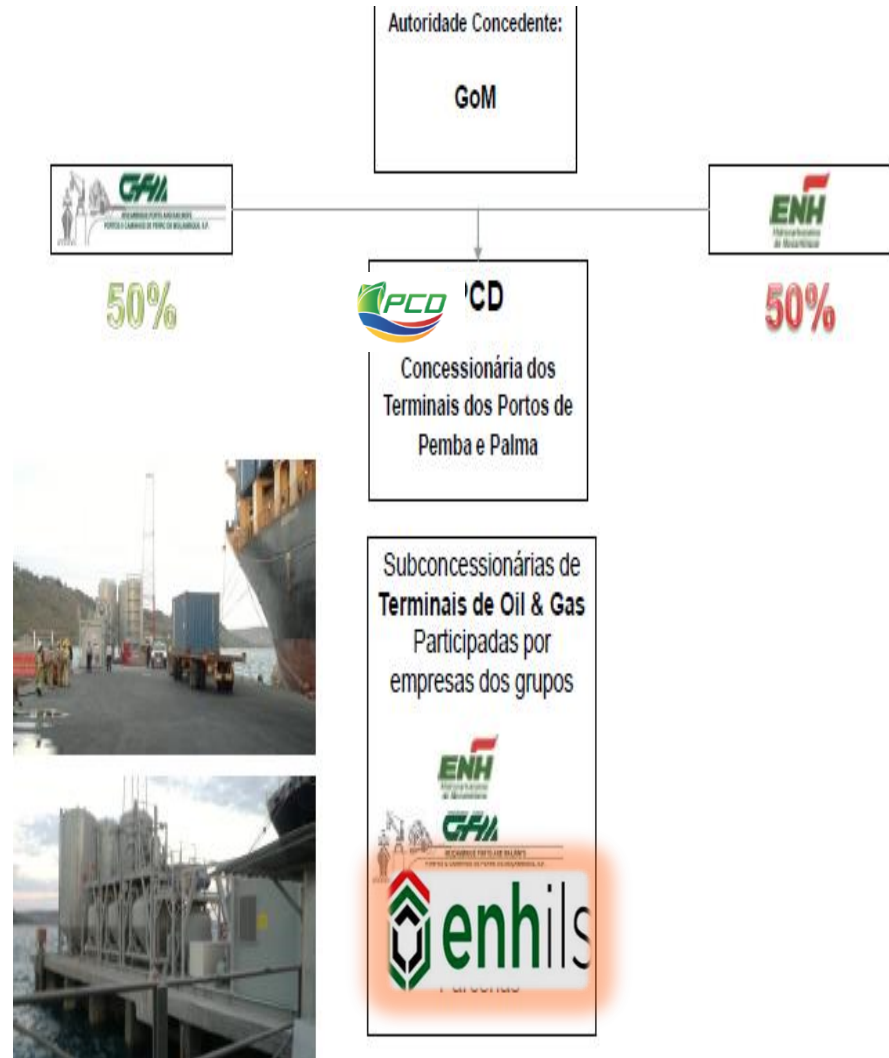
The pre existing conditions of infrastructure and logistics in the port of Pemba are limited to give response to a good performance of the oil and gas industry in this region.



# PCD - Shareholder Structure

It was following this that in December 2013 the Government of Mozambique gave concession of logistic port and terminal of Pemba and Palma to Portos de Cabo Delgado (PCD), a company set up by National Hydrocarbon Company (ENH) and Mozambique Ports and Railways (CFM), with the purpose to develop and implement infrastructures to support oil and gas operations, including the projection, construction, operation and management of specialized port terminals in the province of Cabo Delgado.

The PCD is the vehicle for the support of all the logistics needs of onshore and offshore gas and oil industry in order to develop, manage and regulate port infrastructure in the province of Cabo Delgado.





## **Assumptions for the creation Portos de Cabo Delgado, SA (PCO)**

- In the hydrocarbon industry, it is estimated that about 25% of the investment costs and operation correspond to logistics activities.
- The city and its port of Pemba, at this time, largely support the activities of logistics research of gas operations of the Rovuma Basin;
- The Port of Pemba, currently has limited capacity and that operate with a temporary solution to help this logistic (with temporary pier built by CFM and Bolloré) a permanent solution is needed;
- Investor interest in developing partnerships with the CFM and ENL to the ultimate solution of the logistics terminal in Pemba;
- CFM constitute a public company with a mandate to the port area of public infrastructure and exercise traditionally the power of Port Authority in the country and ENH constitute public company with a mandate to develop the area of hydrocarbons.

# Challenges

**Promote the development of infrastructure**

- *Create adequate capacity in port logistics infrastructure*

**Promote the Supply of Logistics Services**

- *Create conditions for logistics support for exploration, production, transportation and national export*

**Promote industrial development**

- *Create conditions for the establishment of industrial that can support and benefit from the activities of this industry*



# MASTER PLAN FOR THE DEVELOPMENT OF SERVICES CENTER OF OIL AND GAS IN PEMBA

## Key Infrastructure to be built

Planning tool that aims to identify the typology and spatial framework of development of infrastructures required for the port terminal to support the offshore oil and gas industry in Pemba in one place (one stop shop) with the status of special economic zone where the following infrastructure will be built:

- Container terminals;
- Construction sites and manufacturing submarines;
- Piping installations;
- Terminals / Installations fuel supply;
- Ship repair yards;
- Residential, commercial and service facilities;
- Gas processing industries
- Reserve area for future expansion.





## **Key points taken in consideration for the development of the integrated Hydrocarbon logistic services center of Pemba**

- Maximize local content;
- Extensive Training;
- Highest standard of safety;
- Minimize overall environmental impact;
- Shared port infrastructures to minimize costs;
- Avoid multiple locations for port, oil and gas support facilities to exercise effective control over development;
- Possible creation of free zone to attract further investment to Mozambique.



# Phase I

## USD 150,000,000 Investment

*300 meters of quay at 12 meters draft*

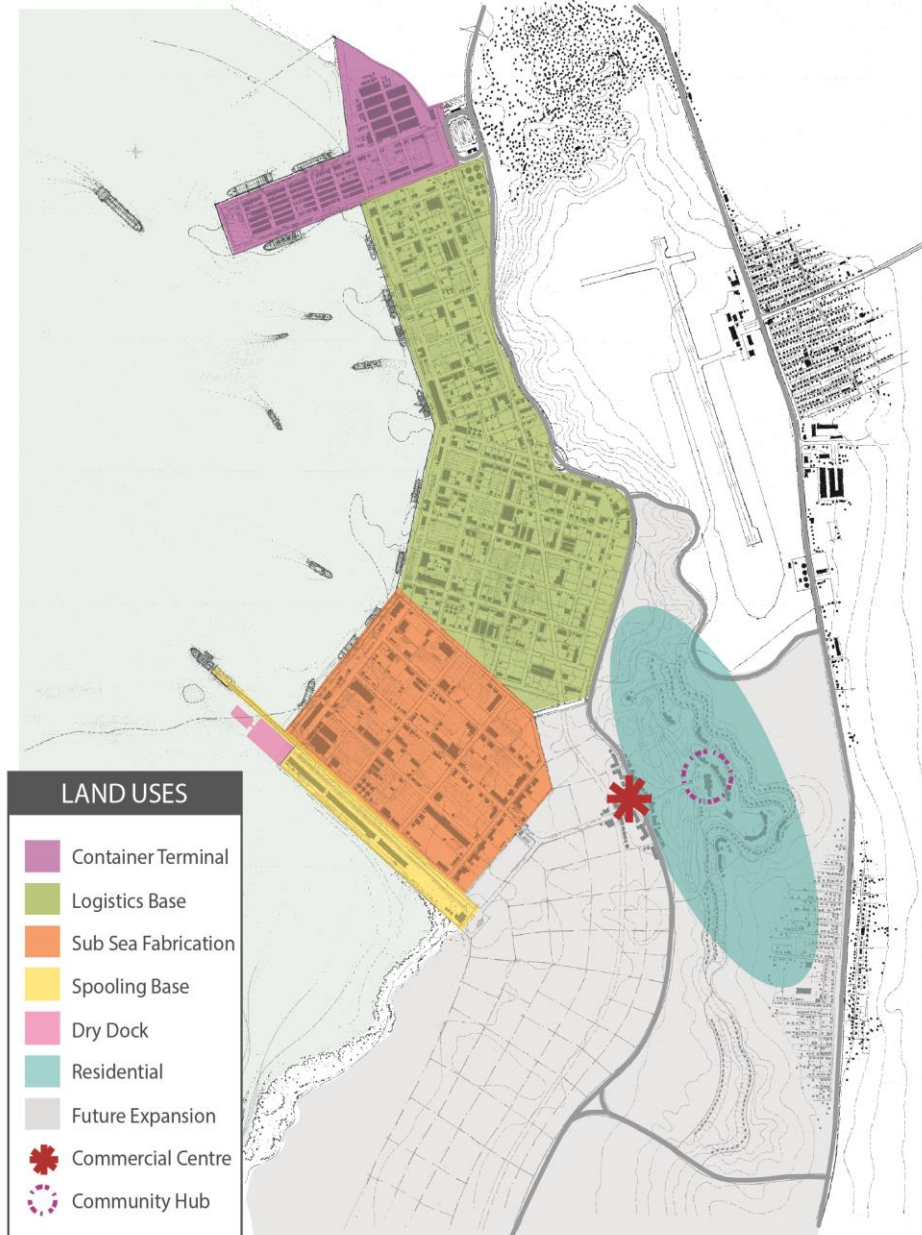
*550000 SQM of support and stacking area for stock of materials*

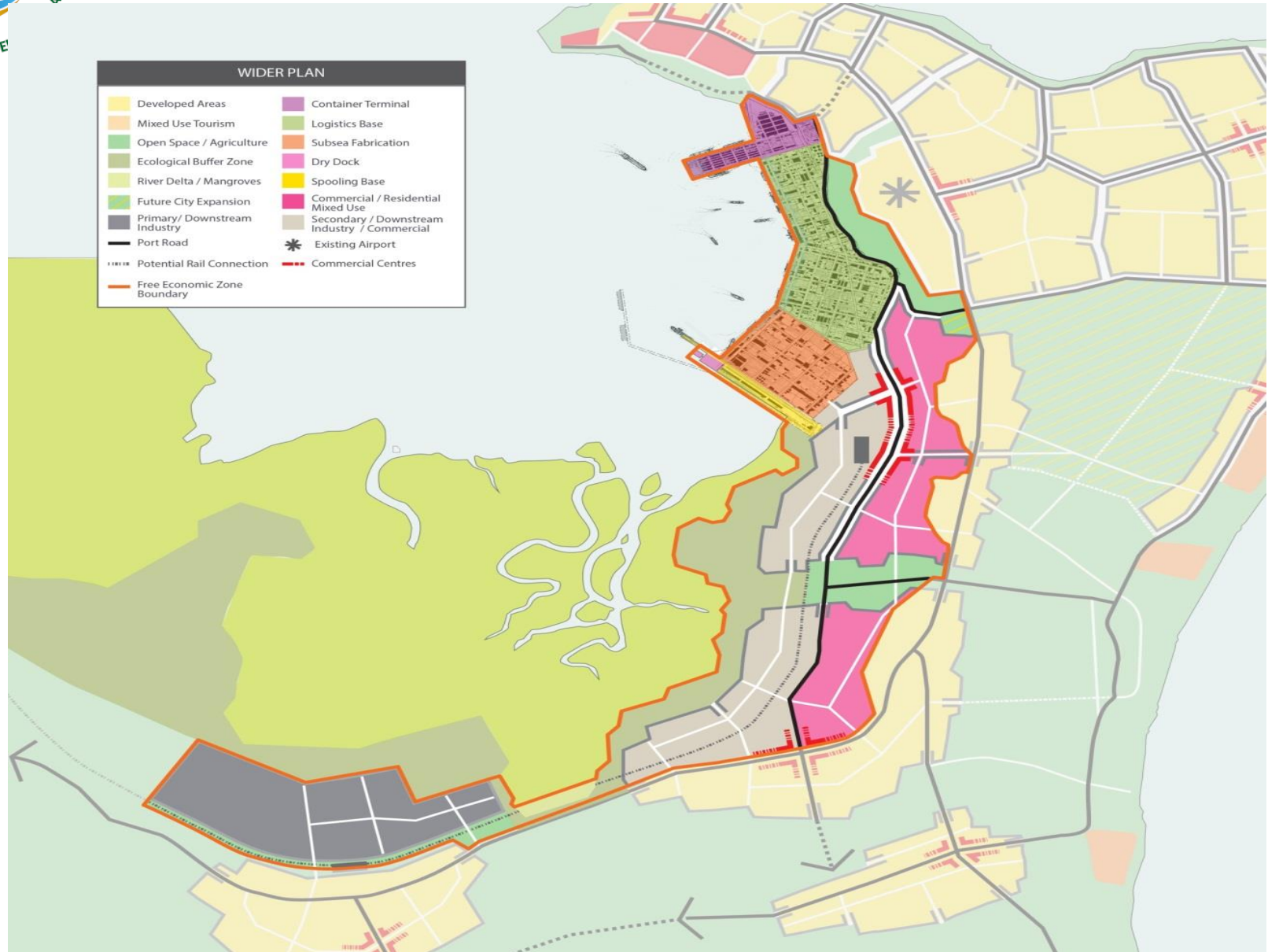
*Water supply and power supply*



# ILLUSTRATIVE PLAN Of PEMBA OIL AND GAS SERVICE CENTRE







# PEMBA OIL & GAS SERVICE CENTRE – 1 FASE



- 300 metros de cais multiuso com 12m de profundidade
- 500 mil metros quadrados de area de armazenamento
- Ruas de acesso e internas
- Provisão e suprimento de agua
- Provisão e suprimento de luz e energia
- Sistema de esgoto
- Segurança 24 horas por dia 365 dias por ano

# LOTEAMENTO DA AREA



DHI Integrated Logistics Services SA	
<b>PEMBA OIL &amp; GAS SERVICE CENTER</b> CONCEPT LAYOUT	
SCALE: 1:17500	Drawing No: PEMBA/01/01/001
Date: 01/01/2010	Rev: 01



# Working Plan

## Pemba Oil & Gas Service Centre - Phase 1 Schedule (Level 1)

Rev.01 / March-14

Sn	Description	2013			2014				2015				2016															
		Q2		Q3	Q4		Q1	Q2	Q3	Q4	Q1	Q2	Q3	Q4	Q1	Q2												
		A	M	J	J	A	S	O	N	D	J	F	M	A	M	J	J	A	S	O	N	D	J	F	M	A	M	J
<b>Pre Construction Phase</b>																												
1	Master Plan / Feasibility Study																											
2	Master Plan review/ Business Plan																											
3	Compensation Study & Implementation																											
4	Special Economic Zone (Preparation, Application, Approval)																											
<b>Construction Phase</b>																												
1	Bathymetric & Topographic Survey																											
2	Geotechnical Investigation																											
3	Environmental Impact Assessment (EIA) / Licence																											
4	Pre Eng. and Preparation of Tender Documents																											
5	Tender Period / Negotiation																											
6	Award of Contract for Marine Works- Design & Build																											
7	Mobilization & Commencement of work																											
8	Early Works - Access Road, Site Office																											
9	300m Quay at 12m and associated facilities - Subsea / Logistics Base																											
10	Earthworks , Stacking Area, etc.																											
11	Oil Service Cos & Anadarko, ENI, Statoil relocating to Pemba OSC (Stacking Area / Ware House/Office)																											

Note: Partial subsea activities can commence towards end Q4-2015 depending upon clients subsea early works requirements"





**Pemba oil and gas service center is an integrated logistic solution base providing benefit, incentives and efficiencies to oil and gas industry.**

